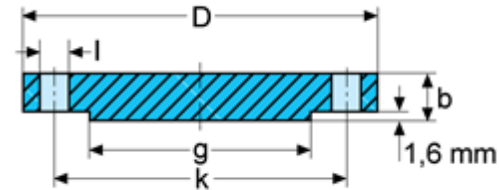


STAINLESS STEEL ASTM A182, ASME B16.5 150lb Raised Face Blind Flanges



Pipe		Flange		Raised face	Drilling template			Weight	Stock standard	
Nom. Size	O.D.	D	b	g	l	k	No. of holes	kg/pce	ASTM 304L	ASTM 316L
in.	mm	mm	mm	mm	mm	mm				
0.50	21.3	88.9	11.2	35.1	15.7	60.5	4	0.42	•	•
0.75	26.7	98.6	12.7	42.9	15.7	69.9	4	0.61	•	•
1	33.4	108	14.2	50.8	15.7	79.2	4	0.86	•	•
1.25	42.2	117.5	15.9	63.5	15.7	88.9	4	1.3	•	•
1.5	48.3	127	17.5	73.2	15.7	98.6	4	1.53	•	•
2	60.3	152.4	19.1	91.9	19.1	120.7	4	2.42	•	•
2.5	73	177.8	22.2	104.8	19.1	139.7	4	4.1	•	•
3	88.9	190.5	23.9	127	19.1	152.4	4	4.93	•	•
4	114.3	228.6	23.9	157.2	19.1	190.5	8	7	•	•
5	141.3	254	23.9	185.7	22.4	215.9	8	9	•	•
6	168.3	279.4	25.4	215.9	22.4	241.3	8	11.3	•	•
8	219.1	342.9	28.4	269.7	22.4	298.5	8	19.6	•	•
10	273	406.4	30.4	323.9	25.4	362	12	28.8	•	•
12	323.8	482.6	31.8	381	25.4	431.8	12	43.2	•	•
14	355.6	533.4	34.9	412.7	28.4	476.2	12	59	•	•
16	406.4	596.9	36.5	469.9	28.4	539.8	16	79	•	•
18	457.2	635	39.6	533.4	31.8	577.9	16	93.7	•	•
20	508	698.5	42.9	584.2	31.8	635	20	122	•	•
24	609.6	812.8	47.8	692.2	35.1	749.3	20	185	•	•