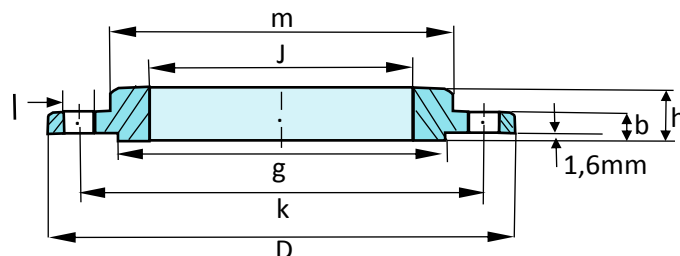


STAINLESS STEEL ASTM A182, ASA 600lb Raised Face Slip On Flanges



Pipe	Flange				Hub	Raised face	Drilling template			Weight	Stock standard		
Nom. size	O.D.1	D	J	b	h	m	g	l	k	No. of holes	kg/pce	ASTM 304L	ASTM 316L
in.	mm	mm	mm	mm	mm	mm	mm	mm	mm				
0.50in	21.3	95.3	22.3	14.2	22.3	38.1	35	15.7	66.7	4	0.8	•	•
0.75in	26.7	117.3	27.7	15.7	25.4	47.7	42.9	19	82.5	4	1.4	•	•
1.00in	33.4	123.9	34.5	17.5	27	53.8	50.8	19	88.9	4	1.6	•	•
1.25in	42.2	133.3	43.2	20.6	28.6	63.5	63.5	19	98.4	4	2.1	•	•
1.50in	48.3	155.4	49.5	22.2	31.7	69.8	73.1	22.3	114.3	4	3.1	•	•
2.00in	60.3	165.1	62	25.4	36.5	84	91.9	19	127	8	3.7	•	•
2.50in	73	190.5	74.7	28.6	41.3	100	104.8	22.2	149.2	8	5.4	•	•
3.00in	88.9	209.5	90.7	31.8	46	117.3	127	22.3	168.1	8	7.3	•	•
4.00in	114.3	273	116.1	38.1	54	152.4	157.2	25.4	215.9	8	15.8	•	•
5.00in	141.3	330.2	143.8	44.4	60.3	188.9	185.7	22.4	266.7	8	24.5	•	•
6.00in	168.3	355.6	170.7	47.6	66.7	222.2	215.9	28.6	292.1	12	29.5	•	•
8.00in	219.1	419.1	221.5	55.6	76.2	273	269.7	31.7	349.2	12	43		•
10.0in	273	508	276.4	63.5	85.7	342.9	323.8	34.9	431.8	16	70	•	•
12.0in	520.7	558.8	327.2	66.7	92.1	400	381	34.9	488.9	16	86	•	•