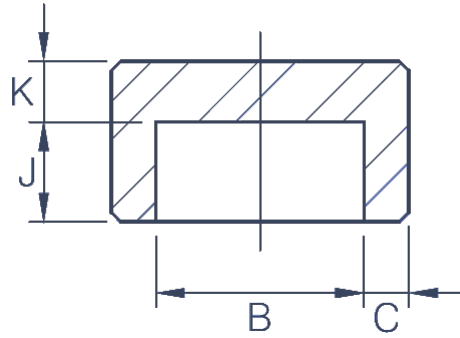


SOCKET WELD CARBON STEEL 3000LB CAP



Socket Welding					
Nom. Pipe Size	B	C		K (Min)	J (Min)
		(Avg)	(Min)		
1/8	10.8	3.18	3.18	4.8	9.5
1/4	14.2	3.78	3.30	4.8	9.5
3/8	17.6	4.01	3.50	4.8	9.5
1/2	21.8	4.67	4.09	6.4	9.5
3/4	27.2	4.90	4.27	6.4	12.5
1	33.9	5.69	4.98	9.6	12.5
1 1/4	42.7	6.07	5.28	9.6	12.5
1 1/2	48.8	6.35	5.54	11.2	12.5
2	61.2	6.93	6.04	12.7	16.0