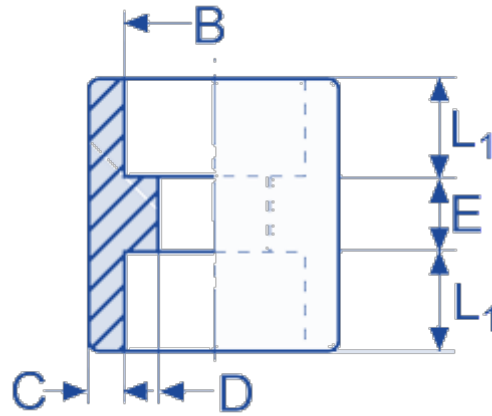


Socket Weld Couplings



MIDSTEEL
FLANGES & FITTINGS
Part of the **PETROCHEM**
GROUP

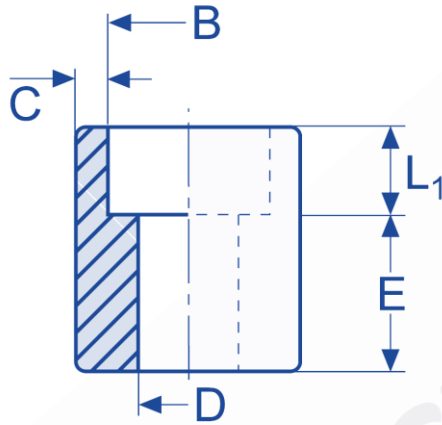


ASTM A182 3000lb ASME B16.11/BS3799

Nominal pipe size	B	L1	C	D	E	Weight	ASTM	ASTM
in.	mm	socket	mm	mm	mm	kg	304/304L	316/316
¼	14.20	9.53	3.30	8.86	6.35	0.05	•	•
⅜	17.60	9.53	3.51	12.14	6.35	0.10	•	•
½	21.80	9.53	4.09	15.42	9.53	0.14	•	•
¾	27.20	12.50	4.27	20.55	9.53	0.20	•	•
1	33.90	12.50	4.98	26.26	12.70	0.30	•	•
1¼	42.70	12.50	5.28	34.67	12.70	0.45	•	•
1½	48.80	12.50	5.54	40.51	12.70	0.60	•	•
2	61.20	16.00	6.05	52.12	19.05	0.95	•	•

•= stock standard

Socket Weld Half Couplings

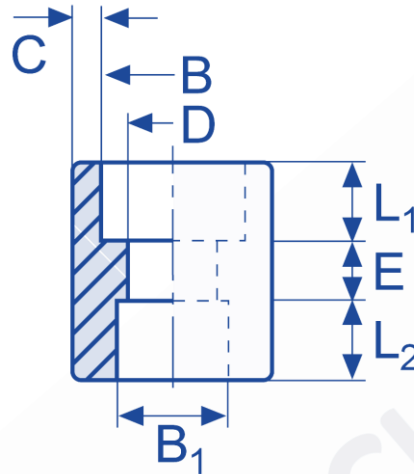


ASTM A182 3000lb ASME B16.11/BS3799

Nominal pipe size	B	L1	C	D	E	Weight	ASTM	ASTM
in.	mm	socket	mm	mm	mm	kg	304/304L	316/316
¼	14.20	9.53	3.30	8.86	15.88	0.06	•	•
⅜	17.60	9.53	3.51	12.14	17.49	0.11	•	•
½	21.80	9.53	4.09	15.42	22.23	0.15	•	•
¾	27.20	12.50	4.27	20.55	23.81	0.21	•	•
1	33.90	12.50	4.98	26.26	28.58	0.35	•	•
1¼	42.70	12.50	5.28	34.67	30.16	0.50	•	•
1½	48.80	12.50	5.54	40.51	31.75	0.65	•	•
2	61.20	16.00	6.05	52.12	41.28	1.10	•	•

•= stock standard

Socket Weld Reducing Half Couplings



ASTM A182 3000lb ASME B16.11/BS3799

Nominal pipe size	B	B1	L1	L2	C	D	E	Weight	ASTM	ASTM
in.	mm	socket	mm	mm	mm	mm	mm	kg	304/304L	316/316
⅜-¼	17.60	14.20	10.00	10.00	3.51	8.86	6.35	0.08	•	•
½-⅜	21.80	17.60	10.00	10.00	4.09	12.14	9.53	0.12	•	•
¾-½	27.20	21.80	12.50	9.50	4.27	15.42	12.70	0.20	•	•
1-¾	33.90	27.20	12.50	12.70	4.98	20.55	12.70	0.30	•	•
1-½	33.90	17.60	12.50	10.00	4.98	15.42	12.70	0.30	•	•
1¼-1	42.70	33.90	13.00	10.00	5.28	26.26	12.70	0.40	•	•
1½-1	48.80	33.90	13.00	10.00	5.54	34.67	12.70	0.50	•	•
1½-1¼	48.80	42.70	13.00	10.00	5.54	34.67	12.70	0.55	•	•
2-1½	61.20	48.80	16.00	12.70	6.05	40.51	22.23	0.95	•	•

•= stock standard