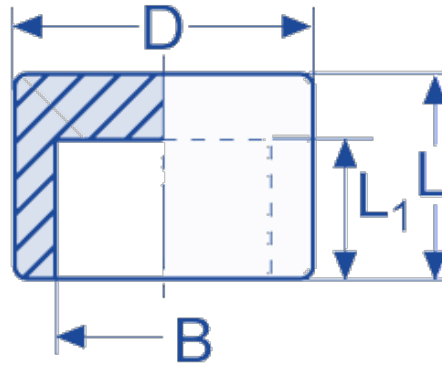




## Socket Weld Caps



**ASTM A182 3000lb ASME B16.11/BS3799**

Nominal pipe size	B	L1	L	Weight	ASTM
<b>in.</b>	mm	socket	mm	kg	316/316
<b>¼</b>	14.20	9.53	19.05	0.06	•
<b>⅜</b>	17.60	9.53	19.05	0.07	•
<b>½</b>	21.80	9.53	22.23	0.14	•
<b>¾</b>	27.20	12.50	25.40	0.16	•
<b>1</b>	33.90	12.50	26.99	0.30	•
<b>1¼</b>	42.70	12.50	30.16	0.45	•
<b>1½</b>	48.80	12.50	31.75	0.55	•
<b>2</b>	61.20	16.00	38.10	1.00	•

•= stock standard